

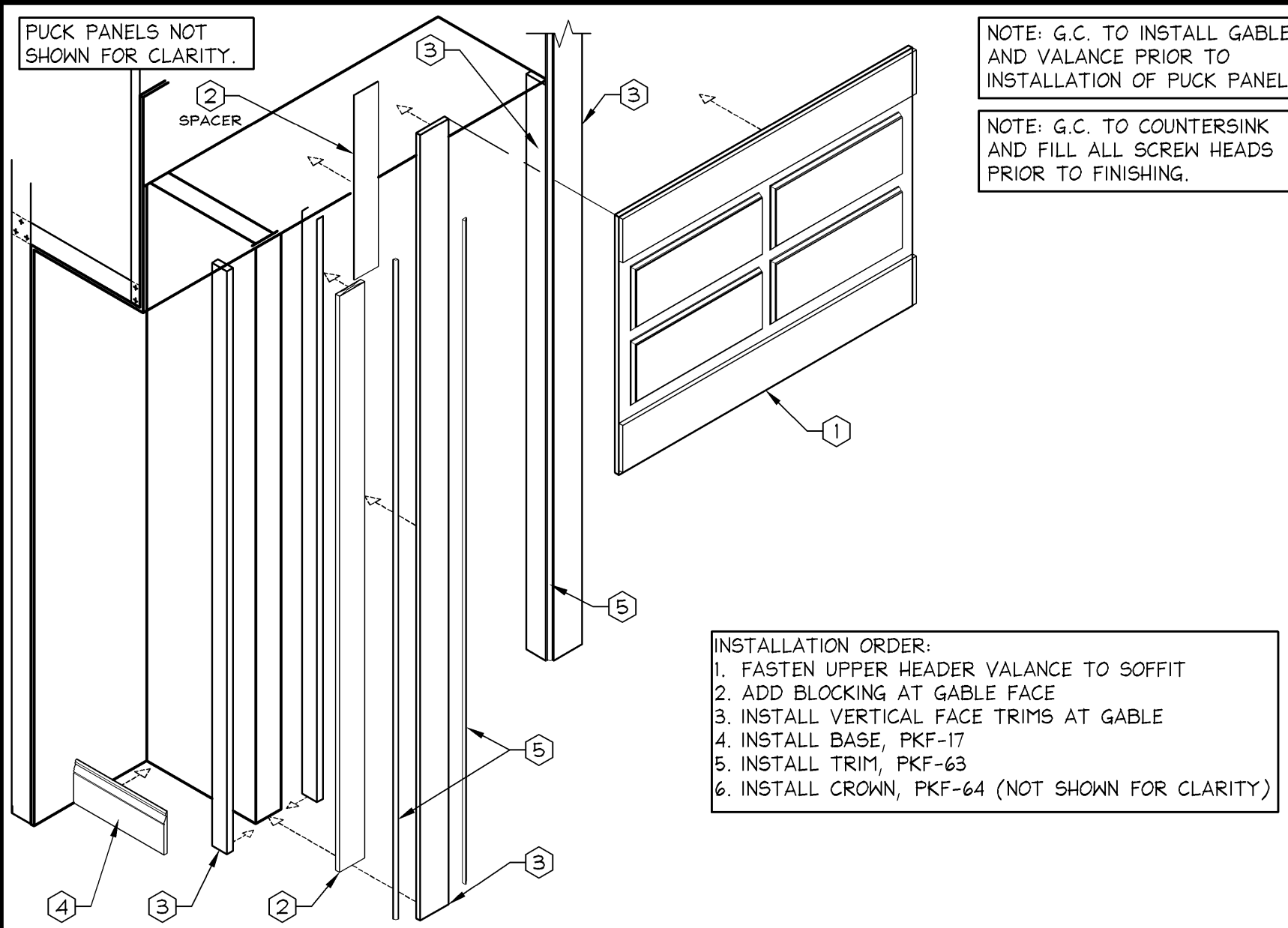
ACCESS PANEL FOR WALL SIGNAGE DETAILS

1 1/2" ± 1'-0"

05D-A1003-G00-DET1

04.04.14

G



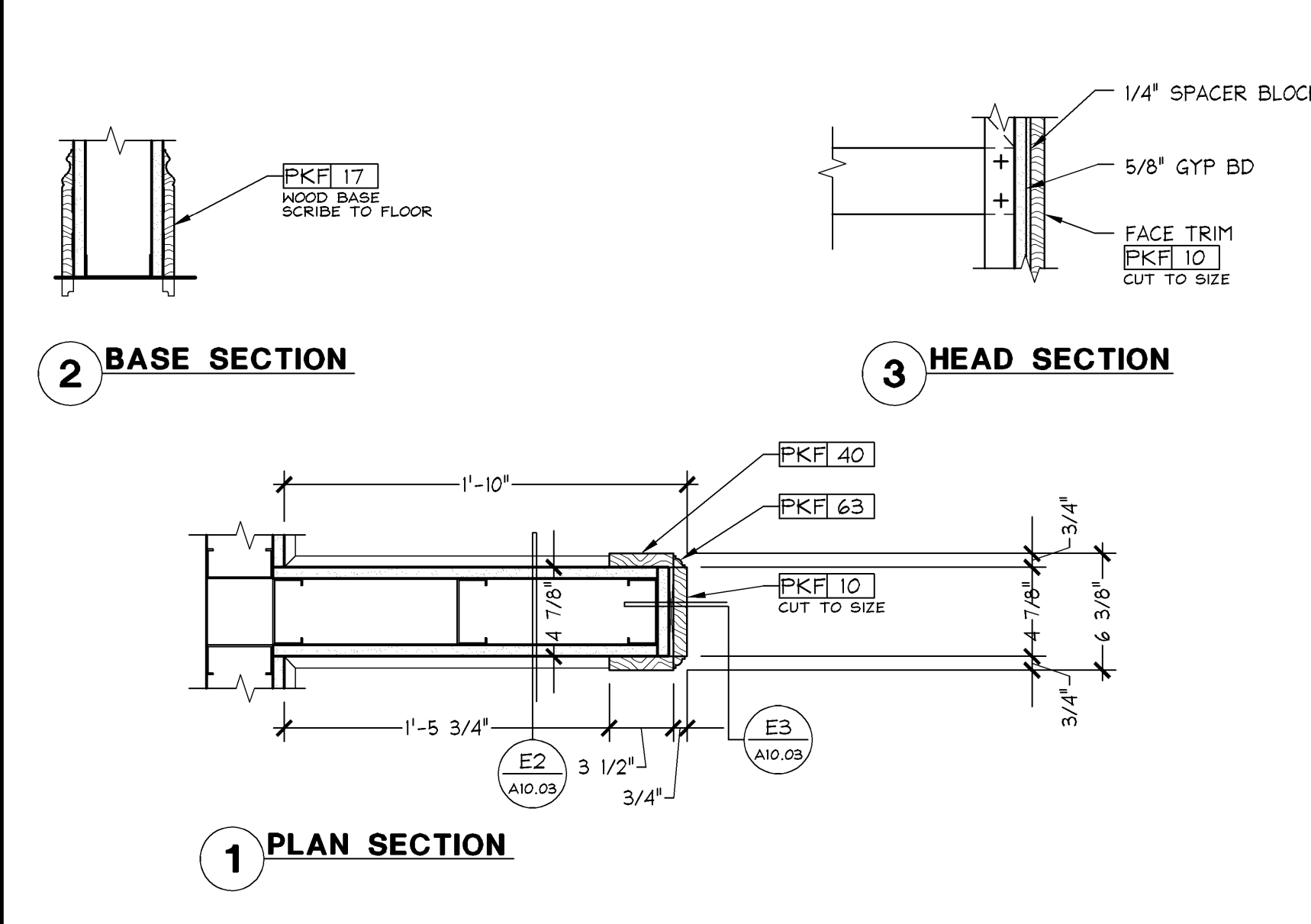
PINK CABINET TYPE C (FIXED) GABLE AND VALANCE INSTALLATION

1/2" ± 1'-0"

05D-A1003-F00-DET1

02.21.14

F



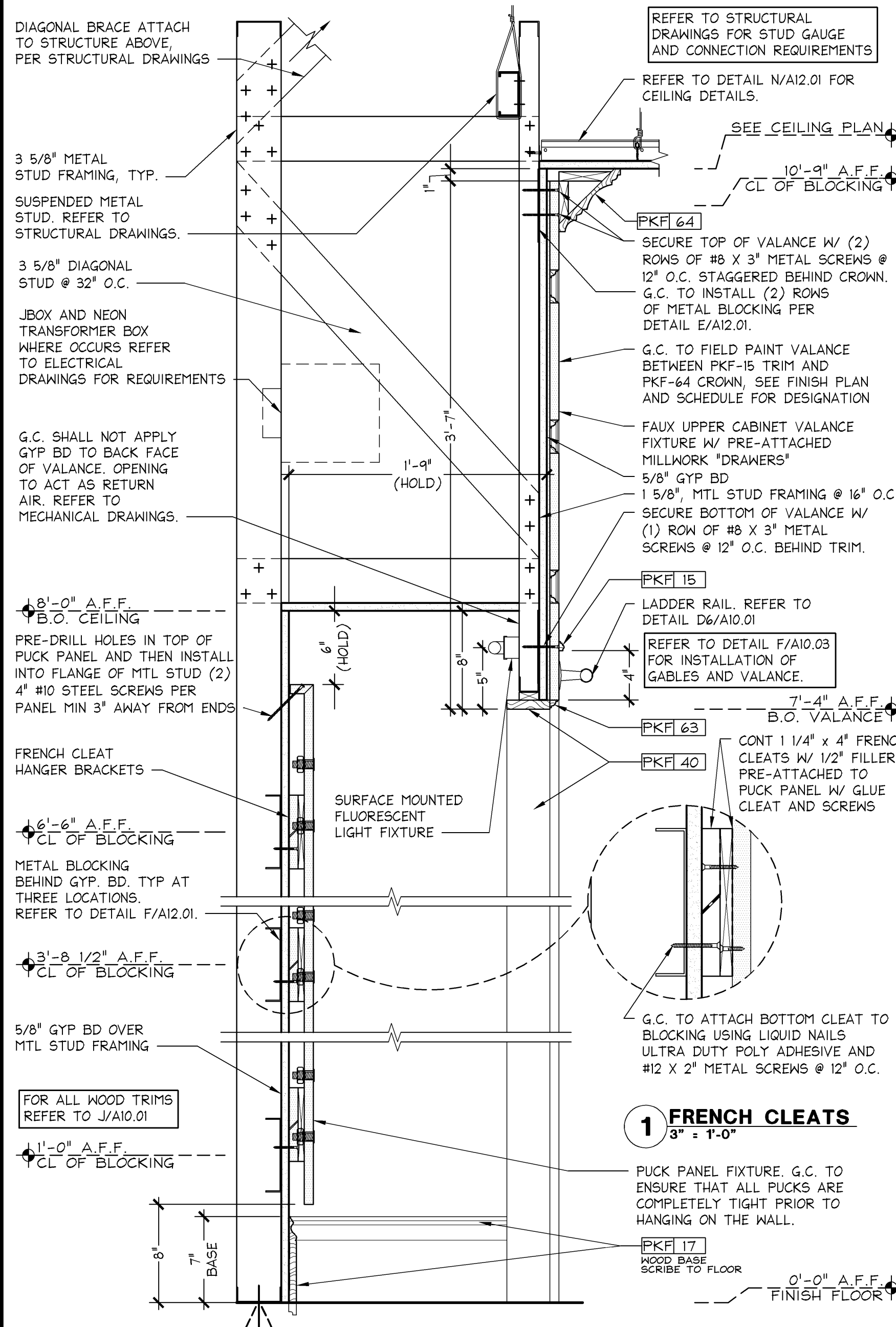
PINK CABINET TYPE C (FIXED) INTERMEDIATE GABLE INSTALLATION

1 1/2" ± 1'-0"

05D-A1003-E00-DET1

05.02.14

E



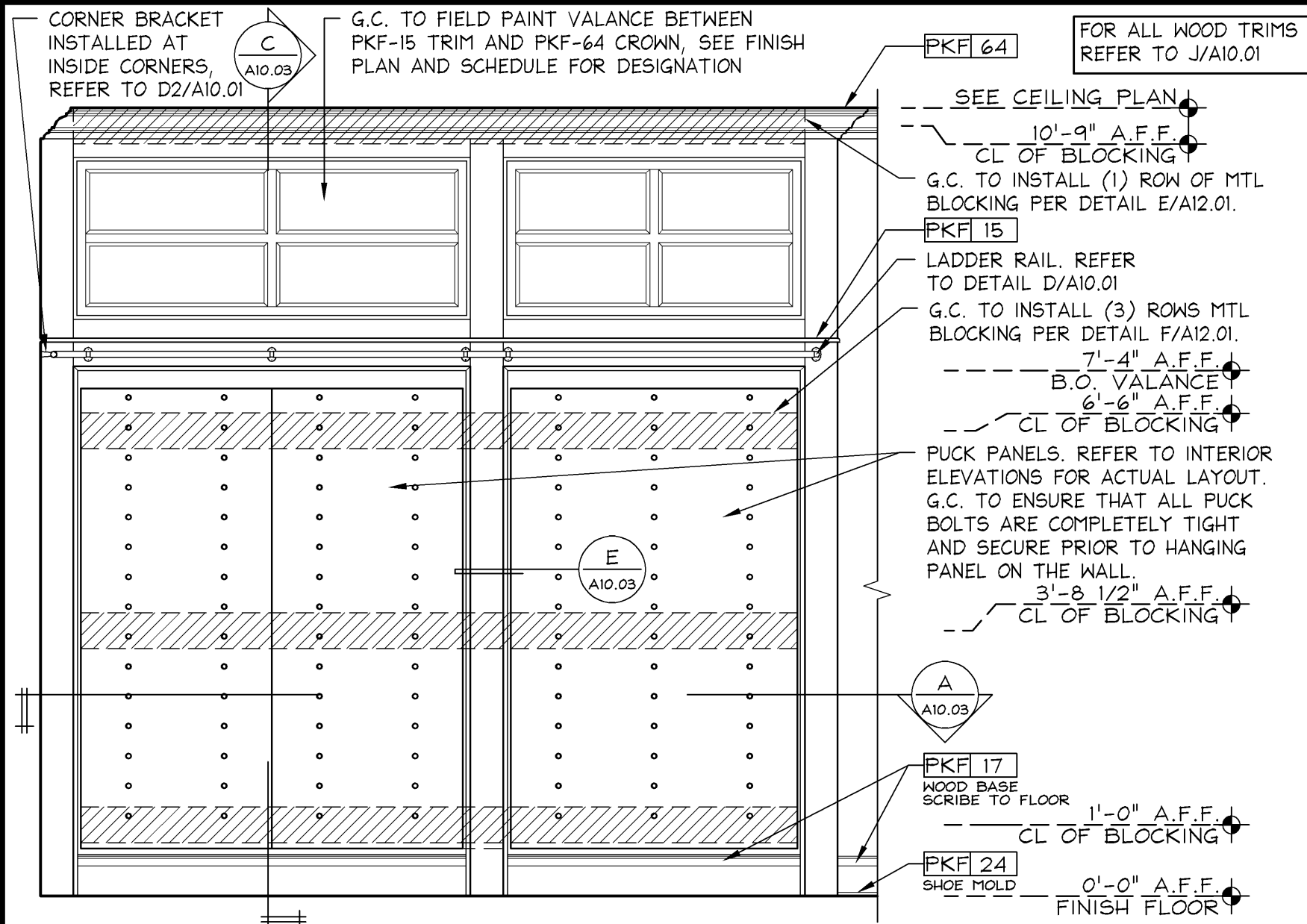
PINK CABINET TYPE C (FIXED) SECTION

1 1/2" ± 1'-0"

05D-A1003-C00-DET1

05.02.14

C



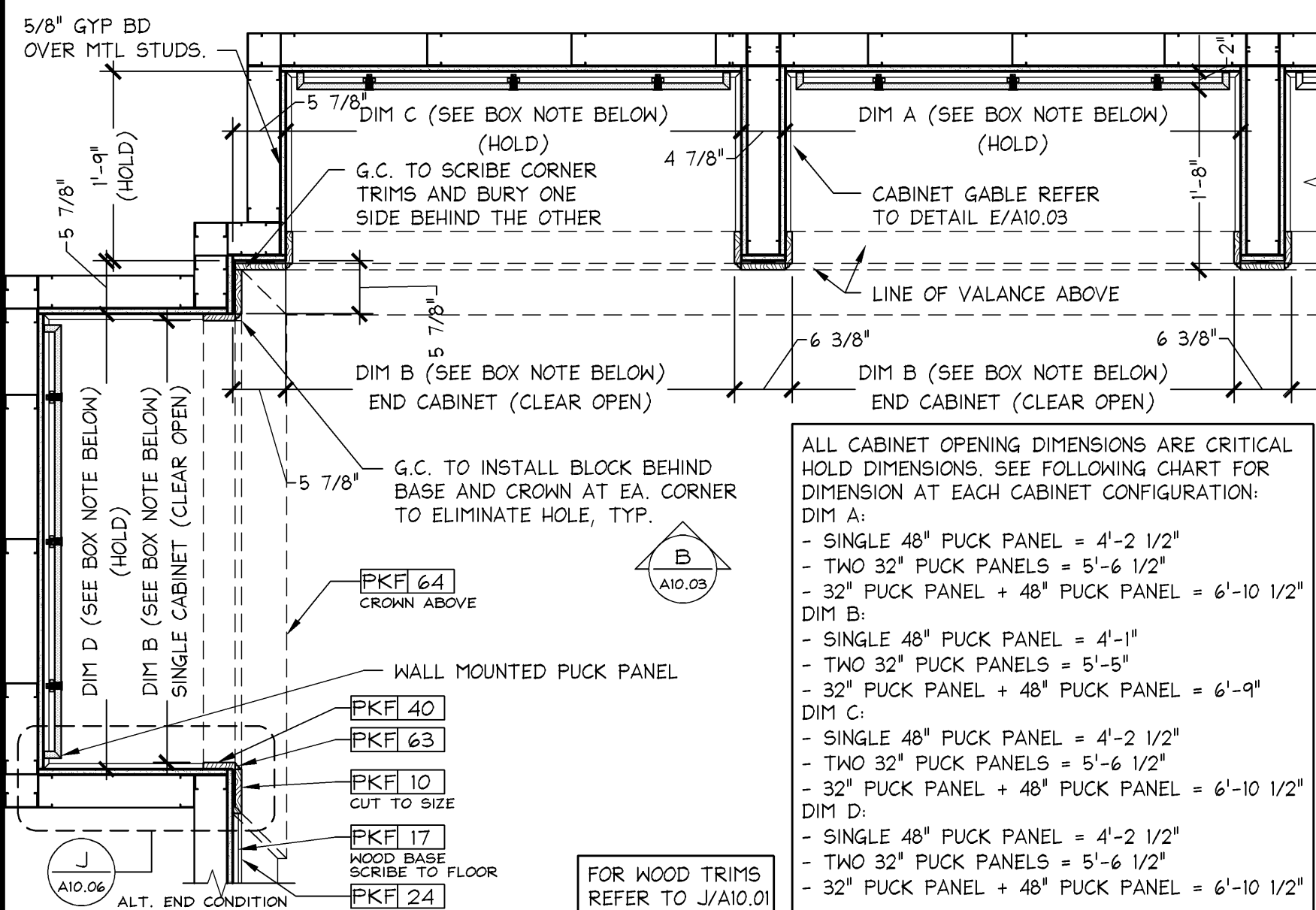
PINK CABINET TYPE C (FIXED) ELEVATION

1/2" ± 1'-0"

05D-A1003-B00-DET1

05.02.14

B



PINK CABINET TYPE C (FIXED) PLAN SECTION

3/4" ± 1'-0"

05D-A1003-A00-DET1

05.02.14

A

GreenbergFarrow

1430 West Peachtree Street NW
Suite 200
Atlanta, GA 30309
t. 404.601.4000 f. 404.601.3970

Limitedbrands

LIMITED STORE PLANNING, INC.
d/b/a STORE DESIGN & CONSTRUCTION

Three Limited Parkway • Columbus, Ohio 43230
Telephone: 614.415.7000 • Fax: 614.415.7349

THESE DRAWINGS AND SPECIFICATIONS ARE PROVIDED FOR THE USE OF A LICENSEE OF LIMITED BRANDS, INC. (LBI) AND ARE NOT TO BE REPRODUCED OR TRANSMITTED IN ANY FORM OR BY ANY MEANS, ELECTRONIC OR MECHANICAL, INCLUDING PHOTOCOPYING, RECORDING, OR BY ANY INFORMATION STORAGE AND RETRIEVAL SYSTEM, WITHOUT THE WRITTEN PERMISSION OF LBI. LBI IS NOT RESPONSIBLE FOR ANY ERRORS OR OMISSIONS IN THESE DRAWINGS AND SPECIFICATIONS. THE USER OF THESE DRAWINGS AND SPECIFICATIONS SHALL BE RESPONSIBLE FOR OBTAINING ALL NECESSARY PERMITS AND APPROVALS FROM THE APPROPRIATE AGENCIES. THE USER OF THESE DRAWINGS AND SPECIFICATIONS SHALL BE RESPONSIBLE FOR OBTAINING ALL NECESSARY PERMITS AND APPROVALS FROM THE APPROPRIATE AGENCIES. THE USER OF THESE DRAWINGS AND SPECIFICATIONS SHALL BE RESPONSIBLE FOR OBTAINING ALL NECESSARY PERMITS AND APPROVALS FROM THE APPROPRIATE AGENCIES.

010501726

PINK VICTORIA'S SECRET

FAYETTE MALL
3401 NICHOLASVILLE RD
SPACE # 1-904
LEXINGTON, KY 40503

NEW PACKAGE: 15153a
PINK GENERATION: 20140534
A/E PROJECT #:

SCOPE: PINK
DESIGN TYPE: 00062007
LSD&C PROJECT #:

REVISIONS:

NO.	DESCRIPTION	DATE
1	ISSUED	09-05-2014
2	DESIGNED BY:	APL
3	DRAWN BY:	AS
4	CHECKED BY:	AJD

PINK CONSTRUCTION DETAILS

DRAWING NUMBER: **A10.03**